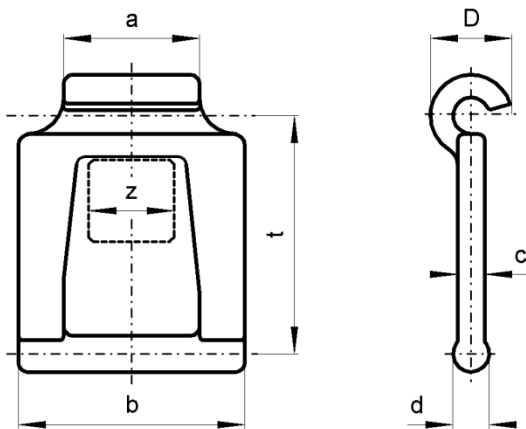




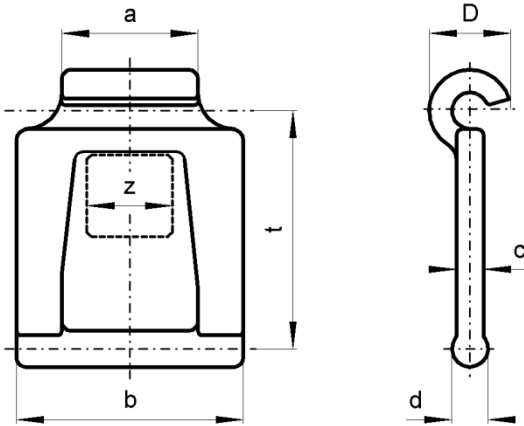
RÜBIG CHAIN SYSTEM „KLASSIK“

- weather-resistant
- low weight
- good weldable
- easy to assemble and disassemble by hand

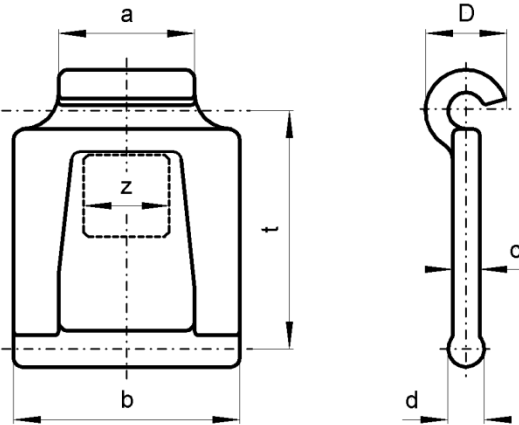
The detachable chain, developed and forged by RÜBIG, has a particular beneficial fibre- and structural condition which provides, beside it's innovative design, the basis for it's durability and toughness.



pitch „t“ version	Order no.	dimensions in [mm]					recommended max. (*) working load	average breaking load
		a	b	d	c	D		
29,3 HF	07293100	17,5	30	6	4	15	8 kN	24 kN
35 HF	07350100	19,5	32	6	4	15	8 kN	24 kN
35 HV	07350200	19,5	32	6	4	15	9 kN	30 kN
39 HF	07390100	20,5	36	7	5,5	16,5	11 kN	36 kN



pitch „t“ version	Order no.	dimensions in [mm]					recommended max. (*) working load	average breaking load
		a	b	d	c	D		
39 HV	07350200	20,5	36	7	5,5	16,5	13 kN	40 kN
41,3 HF	07413100	20,5	36	7	5,5	16,5	11 kN	36 kN
41,3 HV	07413200	20,5	36	7	5,5	16,5	13 kN	40 kN
44 HF	07440100	23	43	8	5	18,5	15 kN	45 kN
49 HF	07490100	20,5	36	7	5,5	16,5	11 kN	36 kN
49 HV	07490200	20,5	36	7	5,5	16,5	13 kN	40 kN
49 INOX	07490300	20,5	36	7	5,5	16,5	8 kN	24 kN
49 E	07490400	20,5	36	7	5,5	16,5	13 kN	40 kN
57 HF	07570100	20,5	36	7	5,5	16,5	11 kN	36 kN
59S HF	07591100	20,5	36	7	5,5	16,5	11 kN	36 kN
59S HV	07591200	20,5	36	7	5,5	16,5	13 kN	40 kN
59S INOX	07591300	20,5	36	7	5,5	16,5	8 kN	24 kN
59 HF	07590100	28	49	7,5	5	19	17 kN	60 kN
59 HV	07590200	28	49	7,5	5	19	19 kN	75 kN
59 E	07590400	28	49	7,5	5	19	20 kN	75 kN
67 HF	07670100	37	62	10	7	25	29 kN	80 kN
67 HV	07670200	37	62	10	7	25	33 kN	100 kN
67 E	07670400	37	62	10	7	25	35 kN	100 kN



pitch „t“ version	Order no.	dimensions in [mm]					recommended max. (*) working load	average breaking load
		a	b	d	c	D		
67 HVB	07670201	37	67	10	7,5	25	33 kN	100 kN
67 EB	07670401	37	67	10	7,5	25	33 kN	100 kN
78,5 HF	07785100	47	82	13	8	32	48 kN	125 kN
78,5 HV	07785200	47	82	13	8	32	55 kN	170 kN
78,5 E	07785400	47	82	13	8	32	55 kN	170 kN
100 HV	07100200	49	85	14	10	35	64 kN	230 kN
100 E	07100400	49	85	14	10	35	64 kN	230 kN
125 HV	07125200	50	85	16	11,5	40	80 kN	280 kN

versions:	description:	field of application:
HF	high strenght	<i>standard version, good weldable</i>
HV	high wear resistant	<i>for applications in mineral bulk material and / or higher chain speed</i>
E	alloyed steel	<i>for special application in industrial plants (such as paper works,...); optionally available in nitrided version; suitable to applications on higher temperatures.</i>
INOX	stainless steel	<i>category „V2A“</i>
*...	valid for "recommended max. working load" up to 10,000 load cycles. At higher demand on the life span, the max. working load has to be reduced accordingly. <i>(in that case - please, get in contact to us)</i>	