

www.rubig.com

RUBIG
DRIVING SUCCESS

**Drive and
conveyor systems
Chains**

So Safe - So Strong



TECHNICAL ADVICE

Construction design and use

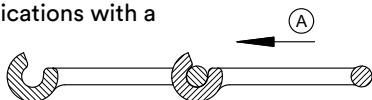
TENSIONER:

We recommend a slideway of min. 1,5 x pitch – if possible: spring-loaded idling wheels

RUNNING DIRECTION:

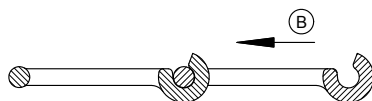
For high chain speed applications with a low working load:

DIRECTION „A“



For all other applications:

DIRECTION „B“



OVERLOAD LIMITATION:

We recommend installation of an overload clutch or shear pin for mechanical drives, or a pressure relief valve for hydraulic drives.

SLIDE RAILS / FLOORS:

We recommend slide rails made from special plastics or in case of scraper floors, to run the scraper bars directly on a steel bottom. The chain should be situated ~2mm above the bottom (no contact).

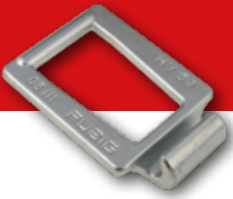
WELDABILITY:

In principle, the chains are weldable. Please take a look at the welding advice provided on our web-site.

We also offer attachment links according to your drawings, sketches or samples!

PAIRWISE RUNNING CHAINS:

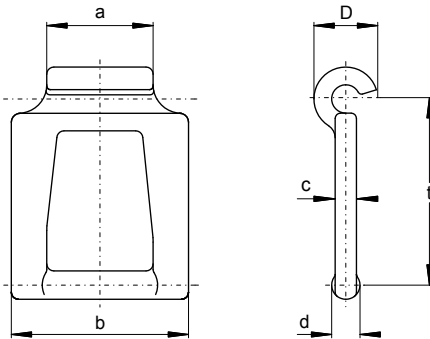
We happily supply them equal in pitch and length, bundled pairwise - without any surcharge. Please indicate pairwise running chains at your inquiry / order!



SOLIDSAFE RÜBIG – CHAIN SERIES „T“

The classic RÜBIG chain well-proven for decades:

- 14 sizes with a pitch range from 29,3 to 125 mm
- Available in 4 different steel grades including stainless steel
- Hot drop die forged, quenched and tempered

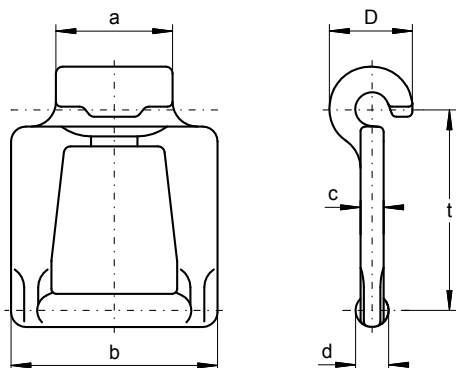


pitch	dimensions in [mm]				
t	a	b	d	c	D
29,3	17,5	30	6	4	15
35	19,5	32	6	4	15
39	20,5	36	7	5,5	16,5
41,3	20,5	36	7	5,5	16,5
44	23,0	43	8	5	18,5
49	20,5	36	7	5,5	16,5
57	20,5	36	7	5,5	16,5
59 „S“	20,5	36	7	5,5	16,5
59	28	49	7,5	5	19
67	37	62	10	7	25
67 „B“	37	67	10	8	25
78,5	47	82	13	8	32
100	49	85	14	10	35
125	50	85	16	11,5	40



LONGERSAFE RÜBIG – CHAIN SERIES „C“

- Suitable for overhead-sprockets
- Enlarged hook section
- Fit with sprockets of the RÜBIG – chain series „T“
(in case of replacement or reconstruction,...)



	pitch	dimensions in [mm]				
type	t	a	b	d	c	D
C6	60,6	37	62	10	7	25
C7	67	37	62	10	7	25
C8	78,5	47	82	13	8	32
C10	100	49	85	14	10	35
C12	125	50	85	16	11,5	40

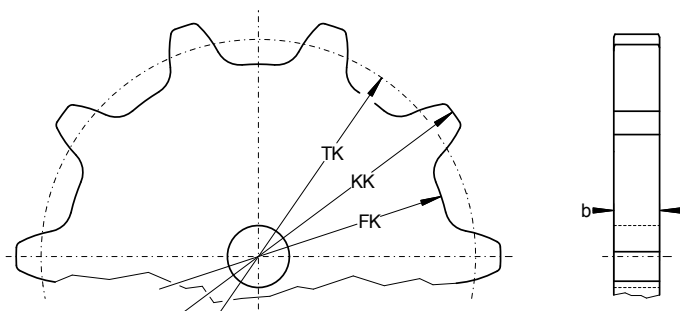
RÜBIG DRIVING
SUCCESS

Please find further information about different versions / kinds of steel, max. recommended working load, max. recommended chain speed, tips for design and application, sprockets, drawings, 3D-datas, etc. at www.rubig.com



SYSTEM SPROCKETS

- Either blanks, cut from material S355JR
- machined, ready for assembling



Extract from our sprocket list
(further sizes available on request)

pitch	teeth	dimensions in [mm]			
t	z	TK	FK	KK	b
29,3	6	58,6	43,6	73,6	15
39	6	78,0	60,9	94,0	18
44	6	88,0	67,4	106,0	20
49	6	98,0	80,5	114,0	18
59	6	118,0	97,0	136,0	22
59	8	154,2	132,8	172,0	22
67	6	134,0	108,0	158,0	25
67	8	175,1	148,7	199,1	25
78,5	6	157,0	120,4	187,0	30
78,5	8	205,1	168,5	235,1	30
100	5	170,1	131,7	205,1	35
100	6	200,0	161,6	235,0	35
125	5	212,7	168,7	257,7	35
125	6	250,0	206,0	295,0	35

We supply sprockets ready for installation (with hubs, bore, keyway, thread, bearings, hardened contour,...) according your drawing, sketch or sample, too. Please send your inquiry to st.office@rubig.com

www.rubig.com

RUBIG
DRIVING SUCCESS



Printing errors and technical changes reserved. Export brochure.



01/2019

Franz Rübige & Söhne GmbH & Co KG

Mitterhoferstraße 17
4600 Wels
Austria

t +43 (0) 7242 / 47 135 0
f + 43 (0) 7242 / 47 135 2055
st.office@rubig.com